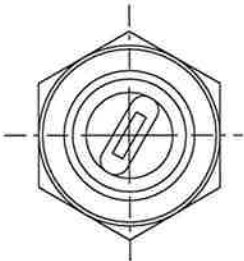
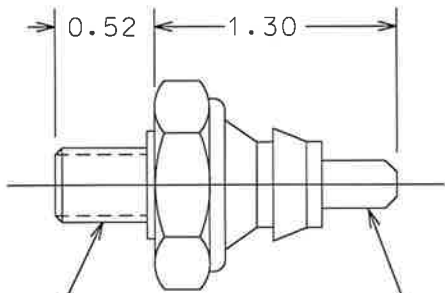
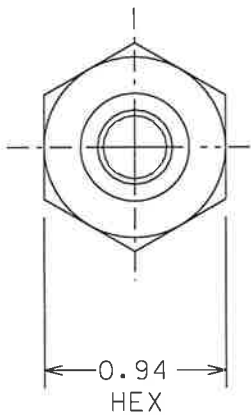
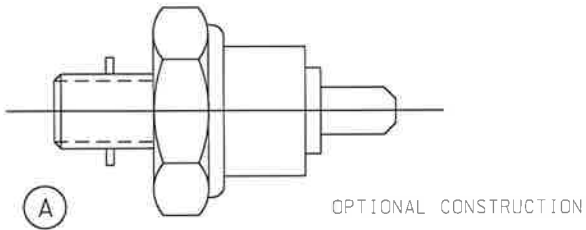


PART NO. PS160

TOLERANCES UNLESS SPECIFIED		
TWO PLACE DECIMALS +/- .015	THREE PLACE DECIMALS +/- .005	ANGLES +/- 1°



M10 X 1 THREADS .25 X .03 BLADE TERMINAL

NORMALLY OPEN CIRCUIT  
CLOSES 26,1 ±2.2 PSI

REPLACES O.E. AUDI/VW #056-919-081E

				MATERIAL	N/A	SCALE	NTS	<b>WELLS</b> MANUFACTURING CORP. FOND DU LAC, WISCONSIN		
				FINISH	N/A	DATE	3-17-94		DWN. BY	CWS
A	ADD OPT. CONST.	28648	6-3-05	GC		ENGINEER	3-17-94	DAL	TITLE	OIL PRESSURE SWITCH
	RELEASED	18334A	3-17-94	CWS		APPROVED	3-17-94	JSK	PART NO.	PS160
L	REVISION	CN	DATE	BY	CAD REF.	N/A	MODEL			